



- EN Quick start guide
- FR Guide de démarrage rapide
- ES Guía de inicio rápido

EM450



EN Before using the appliance, be sure to read the accompanying safety notes inside the user manual.

For further information on operation, refer to the accompanying user instructions.

The accessories may vary in type and number depending on the model.

FR Veuillez toujours lire le livret des consignes de sécurité qui accompagnent le manuel d'utilisation avant d'utiliser l'appareil.









Pour de plus amples informations sur le fonctionnement, veuillez consulter le manuel fournies.

Le type et le nombre des accessoires peut varier en fonction du modèle.

ES Antes de utilizar el aparato lea siempre las advertencias de seguridad incluidas en el manual de usuario.

Para más información sobre el funcionamiento, consulte el manual adjuntas.

Los accesorios pueden variar en tipo y número según el modelo.

ICONS							
							
On/Off Switch Interrupteur On/Off Interruptor de encendido/ apagado	Flashing icon Voyants clignotent Indicador luminoso parpadea	Steam/water Vapeur/eau chaude Vapor/ agua caliente	Wait Attendez Esperar	Descale Détartrage Descalcificación	Cleaning Nettoyage Limpieza	Wait until cool Laisser refroidir Deje que se enfríe	Wait until heat up Attendre que ça chauffe Espere hasta que se caliente

Register your product for these exclusive benefits:

Helpful Tips:

Get the most out of your product with featured videos and recipes

Support:

Faster warranty service and tech support

News and Special Offers:

Special promotions, latest product news and events

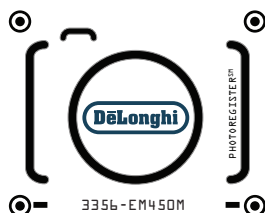
Confirmation of Ownership:

Your registration can serve as proof of purchase

For US and Canada: use your smartphone to easily register in just two steps

1. TAKE A PHOTO

Take a photo of the camera icon below, including the points (📍)



2. SEND IT IN

Send photo via Text, Facebook Messenger or go Online



Text photo
to 71403



Messenger
@Photoregister



Online
www.delonghi.photo

Need help? Visit photoregister.com/help or text HELP to 71403

Bienvenue dans la famille De'Longhi! Enregistrez votre produit et bénéficiez d'avantages exclusifs:

Conseils produit: Recevez d'autres informations sur votre produit, ainsi que des recettes utiles et des vidéos

Nouvelles et promotions: Promotions spéciales, nouvelles et événements

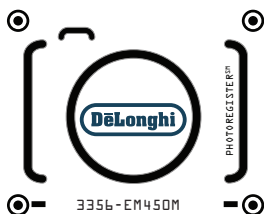
Service après-vente: Contact direct avec le service produits et le service après-vente

Historique de votre: enregistrement produit Suivez votre enregistrement produit

Utilisez votre Smartphone pour facilement vous enregistrer en 2 étapes:

1. PRENDRE UNE PHOTO

Prenez l'icône "appareil photo" ci-dessous en photo, en incluant les points (⊙)



2. SEND IT IN

Envoyez-nous votre photo par SMS, via Facebook Messenger ou visitez notre site



Envoyez votre photo par SMS au 71403



Messenger
@Photoregister



En ligne
www.delonghi.photo

Besoin d'aide pour? Visitez photoregister.com/help ou texte HELP à 71403.

Bienvenido a la familia de De'Longhi! Registre su producto y disfrute de ventajas exclusivas:

Consejos de producto: Sáquele lo máximo de su producto con recetas y videos

Noticias y ofertas especiales: Ofertas especiales, las últimas noticias y eventos

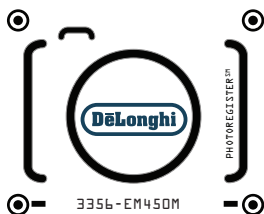
Soporte: Acceso directo a soporte de producto

Confirmación de registro: Servira como historia de registro de su producto

Para Mexico: use su smartphone para registrar en sólo dos pasos

1. TOMAR UNA FOTO

Tome una foto del icono debajo incluyendo todos los puntos (⊙)



2. ENVIALO EN

Envíe su foto por Texto, Facebook Messenger o conectese via la red



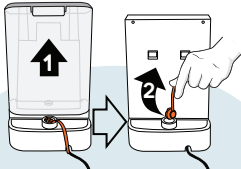
Messenger
@Photoregister



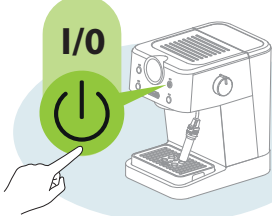
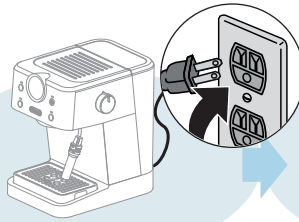
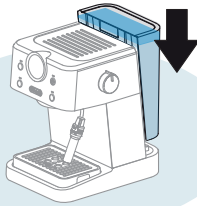
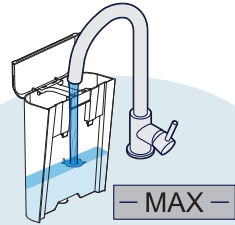
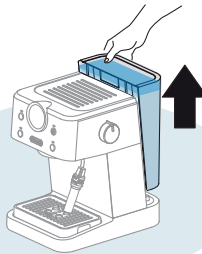
La Red
www.delonghi.photo

¿Necesitas ayuda? Visite photoregister.com/help o 01-800-356-644.

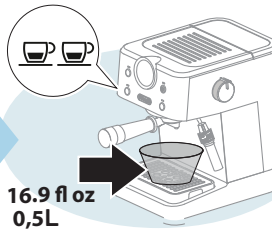
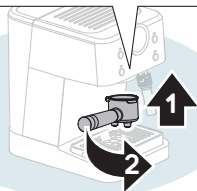
First use - Première utilisation - Primer uso



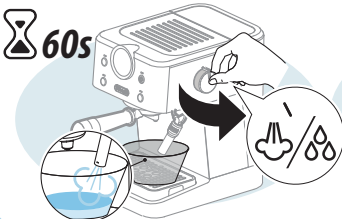
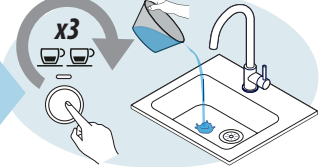
Remove the red plug before inserting the water tank
 Retirez le bouchon rouge avant d'insérer le réservoir d'eau
 Retire el tapón rojo antes de insertar el tanque de agua



INSERT CLOSE



16.9 fl oz
0,5L

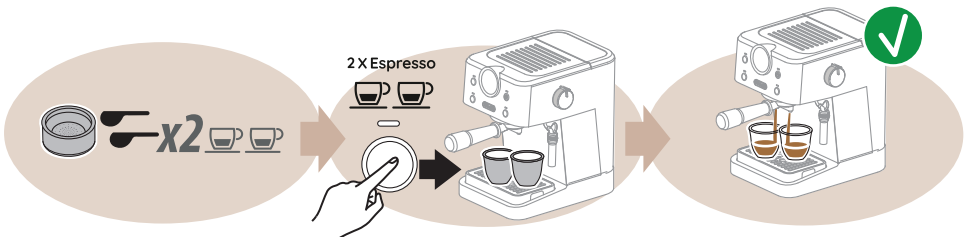
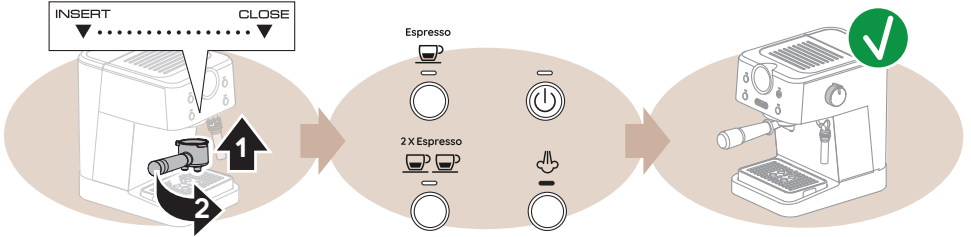
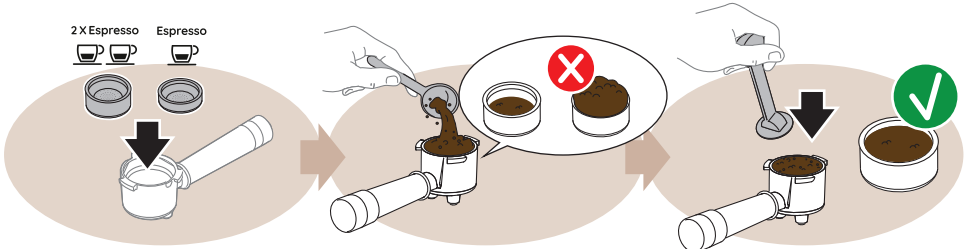


60s

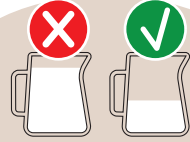
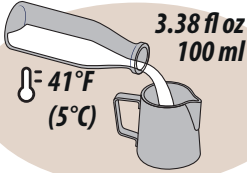
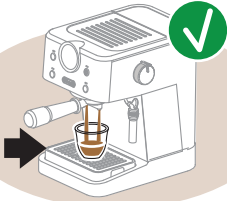


STOP
ARRÊT
DETENER

Espresso



Cappuccino



Espresso



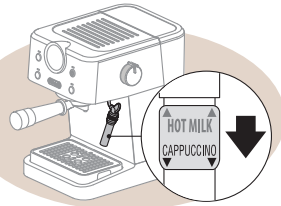
2 X Espresso



Espresso



2 X Espresso



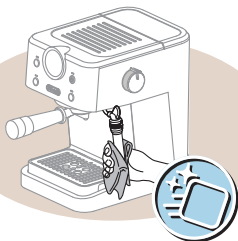
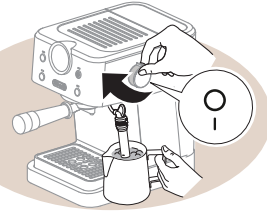
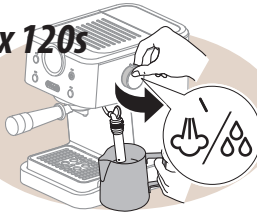
Espresso



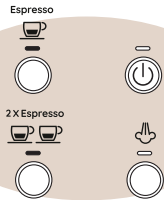
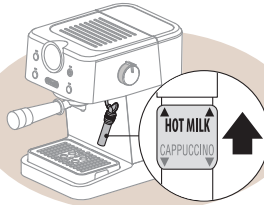
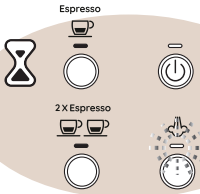
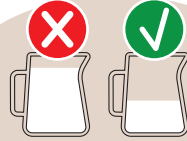
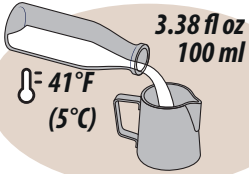
2 X Espresso



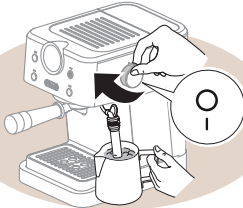
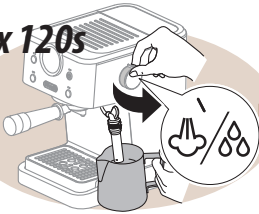
Max 120s



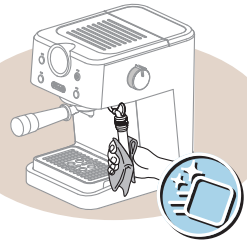
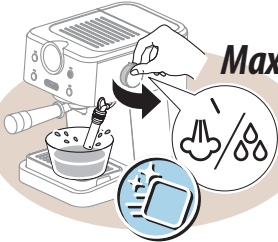
Hot Milk - Lait chaud - Leche caliente

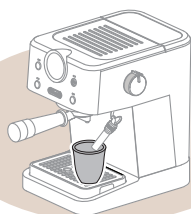


Max 120s



Max 120s



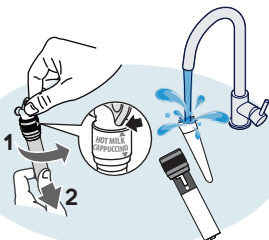
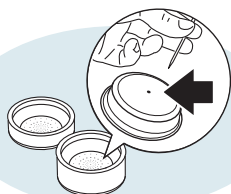
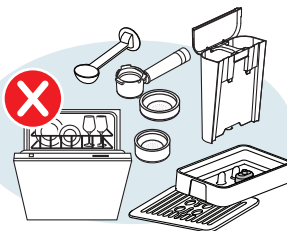
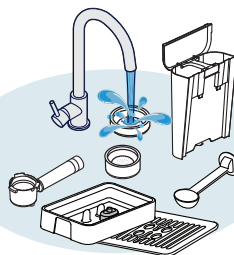
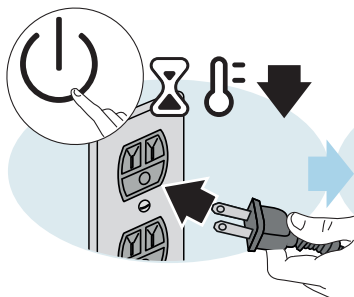
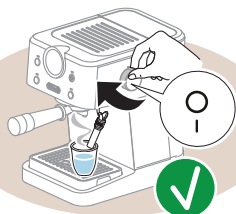
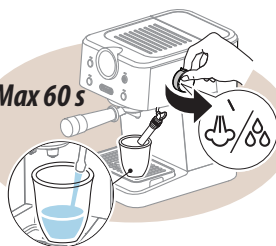


Espresso



2X Espresso

Max 60 s



Descaling - D tartrage - Descalcificaci n

Visit @DeLonghiNorthAmerica on YouTube for video instructions

Visitez @DeLonghiNorthAmerica sur YouTube pour des instructions vid o

Visita @DeLonghiNorthAmerica en YouTube para ver instrucciones en video



(*) ECODECALK[®]
 Available for purchase on:
 Disponible   l'achat sur:
 Disponible para su compra en:
www.delonghi.com

> 33.8 fl oz (1L)



~ 25 min

Espresso

